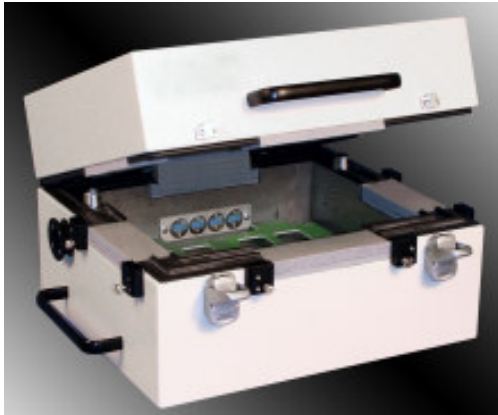


MobileTemp™ Series

Temperature on the Move



MobileTemp CS is shown configured with a TP04300B ThermoStream® temperature source and a Clamshell Style ThermoChamber.



With the top loading **Clamshell Style ThermoChamber**, adding or changing UUTs or cables is quick and convenient.



The Flexible Extender air hose connects easily to the right or left side of the **Clamshell Style ThermoChamber** for ThermoStream® air input.

Clamshell Style ThermoChamber™

The **Clamshell Style ThermoChamber™** is a compact, extremely portable chamber that is ideal for bringing components, assemblies and other parts to temperature directly at the test site.

Key Benefits

- ◆ Portable
- ◆ No LN₂ or CO₂ required.
- ◆ *Frost-free* low temperature testing
- ◆ Uniform, accurate, controlled thermal environment.

Bring Temperature to your Test with MobileTemp™! For the most efficient thermal testing and cycling of UUTs, samples and other devices, use the **Clamshell Style ThermoChamber**, combined with the precision temperature control, and portability of the ThermoStream® System.

ThermoChambers of different sizes and styles (Front Load or Clamshell) may be used interchangeably with the ThermoStream®, providing a modular and flexible range of **MobileTemp™** Systems.

Features and Advantages

- ◆ **-60° to +175°C Temperature Range** (up to +200°C with certain configurations.)
- ◆ Easy **TOP LOAD** access for adding and removing UUTs.
- ◆ Fastest available temperature transition rates:
 - Heating Time, ambient to +125°C: 4.4 minutes.
 - Cooling Time, ambient to -55°C: 14.4 minutes.
- ◆ **ThermoStream's Flexible Extender** air hose allows the ThermoChamber to be placed directly at the test site.
- ◆ Patent pending **Linear Cable Feedthrough Ports** on four sides.
- ◆ Air purge at cable feedthrough maintains a **moisture-free environment** by preventing frost build up.
- ◆ Chamber closure can be verified via integral **Proximity Switch**.
- ◆ **Removable Non-Conductive Support Platform** inside chamber holds the UUT and is easily modified.



MobileTemp CS / June 2007
Doc. Part No. SL10510 R/B

MobileTemp™ Series

Temperature on the Move

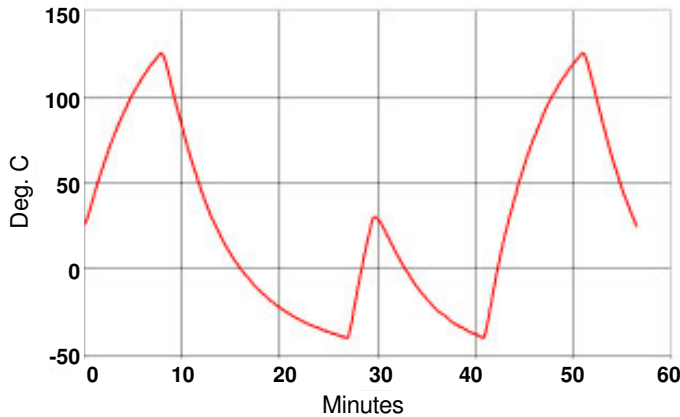
DATASHEET: Clamshell Style ThermoChamber™

Compact Thermal Test Enclosure

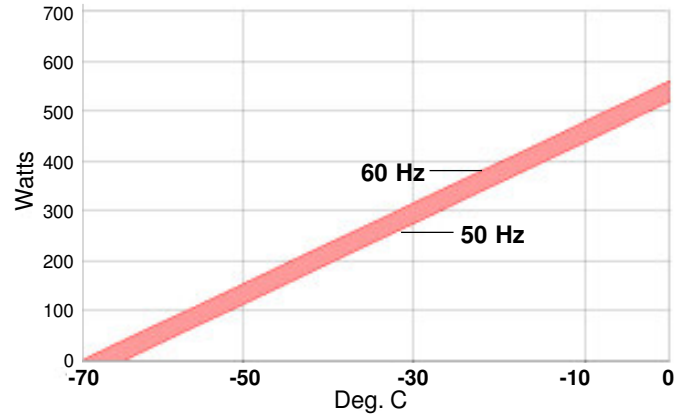
Clamshell Style ThermoChamber™

Typical Performance^{1,2,3}

Transitions



Thermal Capacity



Temperature Change Rate (in minutes)

Ambient to +125°C:	7.8	+125°C to Ambient	6.8
Ambient to -40°C:	10.5	-40°C to Ambient:	2.4

Chamber Uniformity 2.0°C range from setpoint

¹ Refer to Temptronic Product Specification Doc. SL10590 R/A.

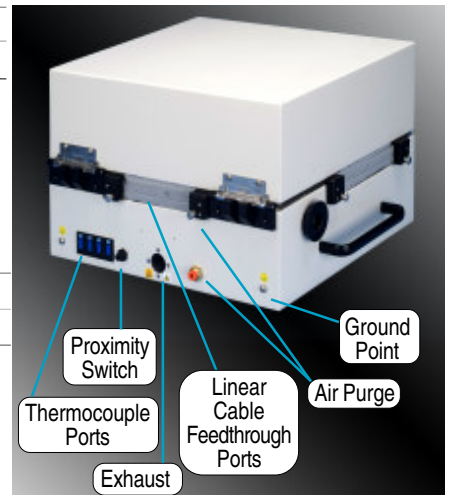
² For optimal performance, use ThermoChamber closest in size to the UUT.

³ Performance is measured on CS1416 using a model TP04300A-8C32 thermal source at 12 scfm air flow rate.

Features

MODEL	CS68	CS1012	CS1416
ThermoCouple Connections	4	4	8
Linear Cable Feedthrough Ports - Designed to accommodate multiple cables laid side by side. (Maximum recommended cable outer diameter is 1.3cm (0.5 in.))			

MODEL	Port Quantity	Port Lengths cm (inches)				
		3.8 (1.5)	6.4 (2.5)	12.7 (5)	15.2 (6)	19 (7.5)
CS68	5	2	2	1		
CS1012	4			3	1	
CS1416	4					4



Weights & Dimensions (nominal)

MODEL	CS68	CS1012	CS1416
Inside Dimension - cm (inches)	15.25D x 20.3W x 10.1H (6 D x 8 W x 4 H)	25.4D x 30.5W x 10 H (10D x 12W x 4H)	35.5D x 40.6W x 10.1H (14D x 16W x 4H.)
Outside Dimension ³ - cm (inches)	25.4D x 30.5W x 26H (10D x 12W x 10.25H)	35.5D x 40.6W x 26H (14D x 16W x 10.25H.)	45.7D x 50.8W x 26H (18D x 20W x 10.25H)
Weight - Kg (lbs.)	7 (15.5)	10.5 (23)	13.4 (29.5)

³ Height includes exterior rubber feet on chamber with a height of 1.27 cm (0.5 in.).

OPTIONS

- ◆ Additional Flexible Extender Hose
- ◆ Removable Non-Conductive Support Platform

These specifications are valid for the standard product and are subject to change without notice. Applications requiring modification of the mechanical, thermal or electrical characteristics should be discussed with Temptronic for possible accommodation at additional cost. ©Copyright, Temptronic 2006, 2007. ThermoStream® is a registered trademark of Temptronic Corporation.



**ISO:9001-2000
Certified**



4 Commercial St., Sharon, MA. 02067 USA
Tel: 781-688-2300 / FAX: 781-688-2301
www.temptronic.com / sales@temptronic.com